



Mt. Tabashine is located on the east side of Hiraizumi Town, a town with a UNESCO World Heritage designation. At the foot of the mountain stands a house surrounded by the tranquility of the countryside. This 150-year-old Japanese house is the home of the Hiraizumi Club and is beautifully renovated into an accommodation locale that serves only one group of guests per day. Welcome to the Hiraizumi Club!



平泉倶楽部

FARM & RESORT
Hiraizumi Club



Catering services are available for meals upon customer request. Please let us know what your needs are regarding the usage the accommodations. Please note that additional charges might apply.



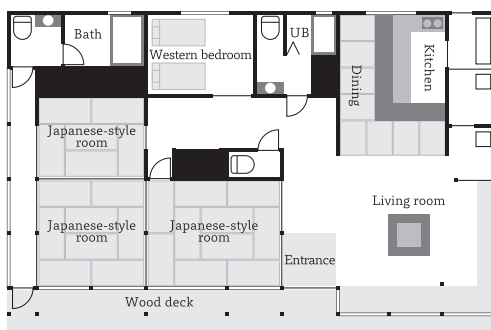


The house hosts three Japanese-style bedrooms and one Western-style bedroom. As if to signal the start of a wonderful day, the morning sunlight shines in from the wide veranda.



The house has two bathrooms, a hinoki (Japanese cypress) wooden bath, and a modular bathroom. The beauties of the hinoki bath are the elegant fragrance and the soft feel of the wood. The unique fragrance that gets released each time when the bath gets wet in warm water creates a time just for you to relax in the bath.

House layout



Also, the samue robes, which are provided as amenities, are traditional Japanese casual clothes. They are originally the working attire of monks, worn while doing daily chores. You can feel comfortable in a samue regardless of season.



Information

Charge Limited to only one group of guests
¥100,000 per night (plus tax)

Maximum number of guests
9 persons

Check-in time: 3 p.m. to 9 p.m.

Check-out time: 10 a.m.

Access

By car

Tohoku Expressway (10 mins) via Prefectural road route 237
Hiraizumi Maesawa I.C.

Tohoku Expressway (20 mins) toward Hiraizumi
Ichinoseki I.C.

By public transport

Tohoku Shinkansen (Tohoku Bus to Rikuchu Hakosaki) 10 mins on foot
Tokyo Station 2 hrs Ichinoseki Station Maebayashi

Tohoku Shinkansen (Tohoku Bus to Rikuchu Hakosaki) 30 mins on foot
Tokyo Station 2 hrs Ichinoseki Station Hiraizumi Station

* We recommend to go by car as the distance from Hiraizumi Station is far.
* Hiraizumi Club offers pick-up service from both Hiraizumi and Ichinoseki Stations.

平泉倶楽部

FARM & RESORT

〒029-4101

78-1, Maebayashi, Nagashima,
Hiraizumicho, Nishiiwaigun, Iwate

Reservation

☎ 0191-26-0015

hiraizumi-club.jp

[booking.com](https://www.booking.com/hiraizumi-club) [hiraizumi club Q](https://www.hiraizumi-club.com)

